

## Optomap Retinal Wellness Screening

At Evergreen Eye Care, we are proud to provide our patients with the most advanced technology available in retinal imaging and wellness screening today.

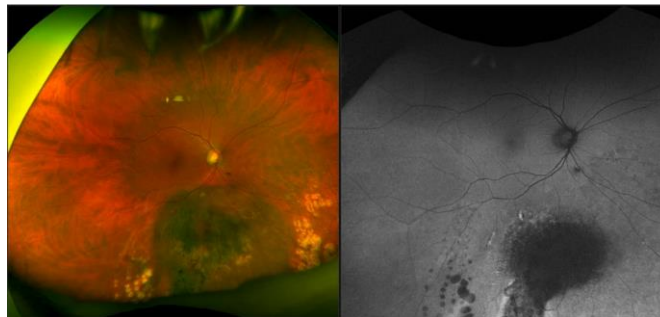
An Optomap Retinal Wellness Screening is currently the standard of care, for early detection of retinal problems such as **retinal holes, retinal detachments, diabetic retinopathy, hypertensive retinopathy, macular degeneration, glaucoma, and eye cancers**. It also provides us with a baseline record of your ocular anatomy so that we are quickly able to detect any changes in your retinal health between each visit. Because of this, the screening is done at each annual examination.

Our Optomap Retinal Wellness Screening includes digital images of the retina produced by Optos ultra-widefield imaging technology that captures more than 80% of your retina in a single image, while traditional imaging methods typically only show 15% of your retina at one time. Getting an Optomap image is fast, painless, and comfortable. Nothing touches your eye at any time.

Dr. Felger believes this technology to be an extremely valuable addition to your eye-health examination. Please note that the Optomap Retinal Wellness Screening may not be covered by insurance and is an additional fee of \$39.00.



*The Optos Daytona*



*Example: Detection of Melanoma (Cancer of the Eye)*